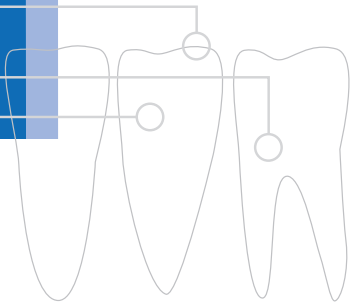


3M ESPE

A new benchmark for flowable composites
delivering high strength and low wear



Filtek™

Supreme Plus
Flowable Restorative

Supreme versatility is just one advantage of this flowable nanocomposite.

- Better esthetics due to 3M ESPE's unique nanotechnology
- Nanotechnology for better gloss retention
- Flow-on-demand handling that dentists prefer
- Low wear
- Excellent radiopacity
- Available in 12 shades, including Opaque A3 which makes a great liner/base

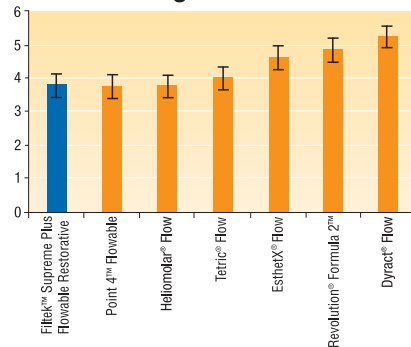
Filtek™ Supreme Plus Flowable Restorative from 3M ESPE uses the nanotechnology of Filtek™ Supreme Plus Universal Restorative, making it esthetic, strong and wear-resistant.

This clinical case study demonstrates how this low viscosity composite can be used as both a filling material and a liner/base.

Filtek Supreme Plus Flowable Restorative can be used for restoration of minimally invasive cavity preparations (including Class III and V restorations, and occlusal pits and fissures).

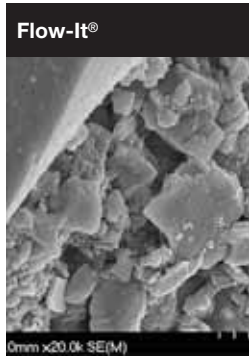
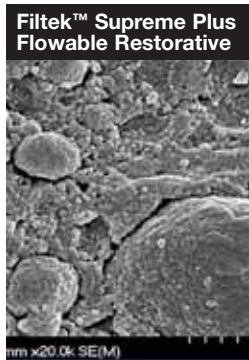
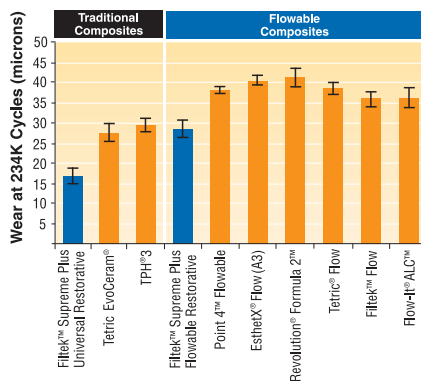
- It offers less polymerization shrinkage.

Shrinkage of Flowables*



- Using a low-modulus flowable as a liner may absorb some of the polymerization stress of a conventional composite.
- Filler load of 55% contributes to wear resistance that is better than leading flowables, and comparable to some traditional microhybrids.

Wear of Flowables*



SEM photomicrographs at 20,000X magnification show 3M ESPE's nanotechnology in comparison to leading flowable composite.

Courtesy of Dr. Jorge Perdigao, University of Minnesota

*Source: 3M ESPE internal data



Filtek Supreme Plus Flowable Restorative: Used as a filling material



Preparation of cavity



After adhesive is applied and light-cured, Filtek™ Supreme Plus Flowable Restorative is placed in the Class I cavity.



The final restoration is light-cured.

Clinical photos courtesy of Dr. C. P. Ernst

Case



Finished Restorations

Filtek Supreme Plus Flowable Restorative: Used as a liner



1

Filtek™ Supreme Plus Flowable Restorative is applied to the proximal box of the cavity.



2

Filtek™ Supreme Plus Universal Restorative completes the restoration.

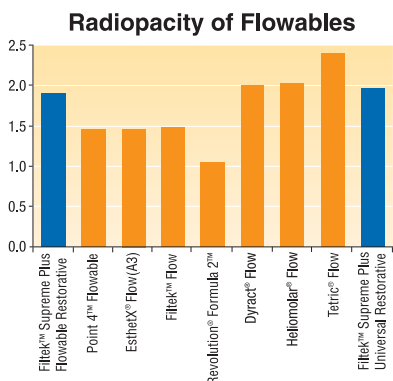


3

The final restoration after light-cure.

Filtek Supreme Plus Flowable Restorative allows higher filler loading, yet its low viscosity makes it ideal as a liner.

- During extrusion it becomes more fluid, and flows readily for easy adaptation to the preparation and effective coverage.
- Once placed and the flow ceases, the material returns to its original, nonslumping viscosity and holds its shape.



Source: 3M ESPE internal data

- Radiopacity is a weakness of some flowables, but the nano-zirconia of Filtek Supreme Plus Flowable Restorative makes it more visible on a radiograph.

The flowable you can use with confidence.

There are many flowable restoratives on the market, but only Filtek Supreme Plus Flowable Restorative gives you the advantages of 3M ESPE's proven nanotechnology.

You can rely on its performance as a high-strength, low-wearing, esthetic option for restorations* that benefit from the low viscosity of a flowable. Proven for your practice by 3M ESPE ... a trusted leader in restorative innovation.



*Excellent compressive and tensile strength and optimal wear resistance make Filtek Supreme Plus Flowable Restorative ideal for a variety of indications:

- Class III and Class V restorations
- Base/Liner
- Pit and fissure sealant
- Minimally Invasive Dentistry (MID)

Ordering Information



**3M™ ESPE™ Filtek™
Supreme Plus Flowable
Restorative Introductory Kit**



**3M™ ESPE™ Filtek™
Supreme Plus Flowable Refills**

Item Number	Product Information	
5032	Filtek™ Supreme Plus Flowable Restorative Introductory Kit Includes 5 – 2g syringes, 1 each of 5 different shades (A2, A3, A3.5, W, OA3); 60 – dispensing tips	
Filtek™ Supreme Plus Flowable Restorative Refills		
5032A1	A1	2 – 2g syringes of Shade A1
5032A2	A2	2 – 2g syringes of Shade A2
5032A3	A3	2 – 2g syringes of Shade A3
5032A3.5	A3.5	2 – 2g syringes of Shade A3.5
5032A4	A4	2 – 2g syringes of Shade A4
5032B1	B1	2 – 2g syringes of Shade B1
5032B2	B2	2 – 2g syringes of Shade B2
5032C2	C2	2 – 2g syringes of Shade C2
5032D2	D2	2 – 2g syringes of Shade D2
5032W	White	2 – 2g syringes of Shade W
5032XW	Extra White	2 – 2g syringes of Shade XW
5032OA3	Opaque A3	2 – 2g syringes of Shade OA3
3700T	Dispensing Tips	20 – tips

Customer Care Center: 1-800-634-2249 www.3MESPE.com

3M ESPE

Dental Products

3M Center
Building 275-2SE-03
St. Paul, MN 55144-1000
U.S.A.
1-800-634-2249

3M Canada

Post Office Box 5757
London, Ontario N6A 4T1
Canada
1-800-363-3685

Please recycle.

© 3M 2008. All rights reserved.

Printed in U.S.A.

3M, ESPE and Filtek, are trademarks of 3M or 3M ESPE AG. Used under license in Canada. Dyract, EsthetX, Flow-It, Flow-It ACL, Heliomolar, Point 4, Revolution Formula 2, Tetric, Tetric EvoCeram and TPH are not trademarks of 3M.

70-2009-3830-9